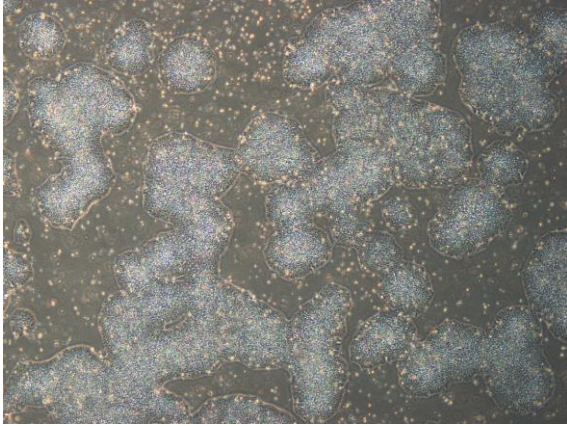
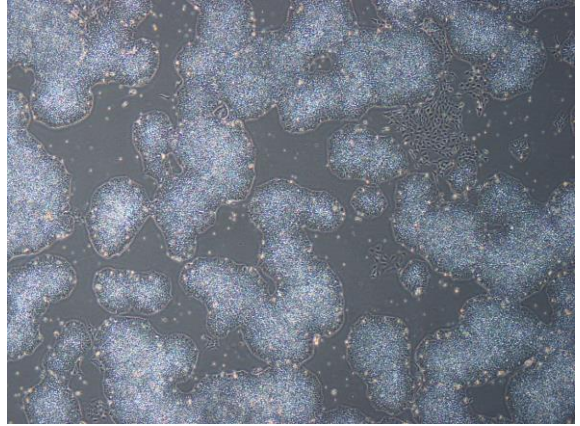


## 【 CiRA-j-1623 】 Morphology of iPSC colonies

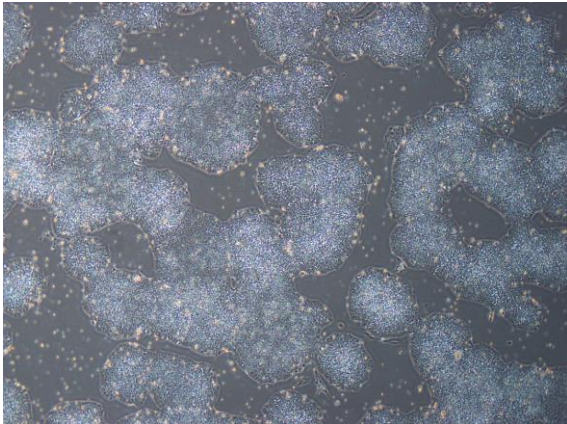
CiRA-j-1623-A: passage-3



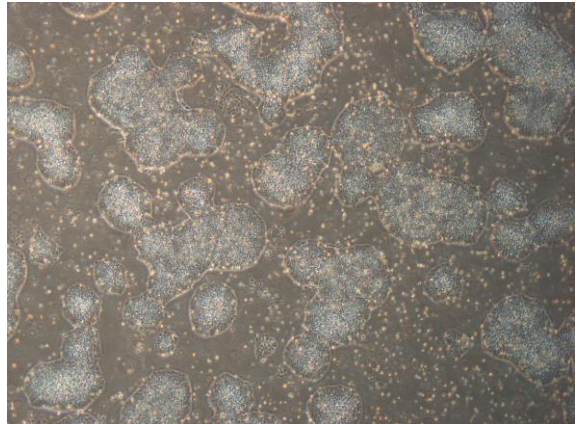
CiRA-j-1623-B: passage-3



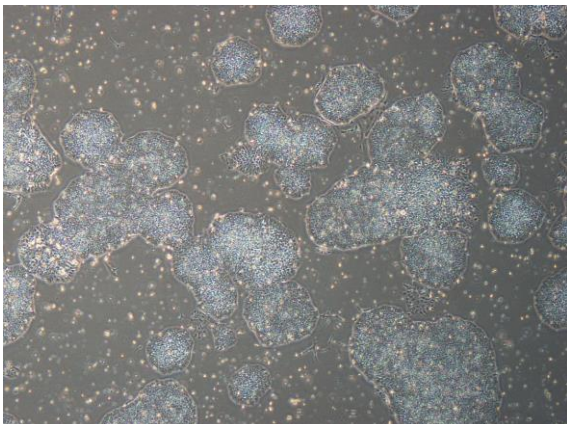
CiRA-j-1623-C: passage-3



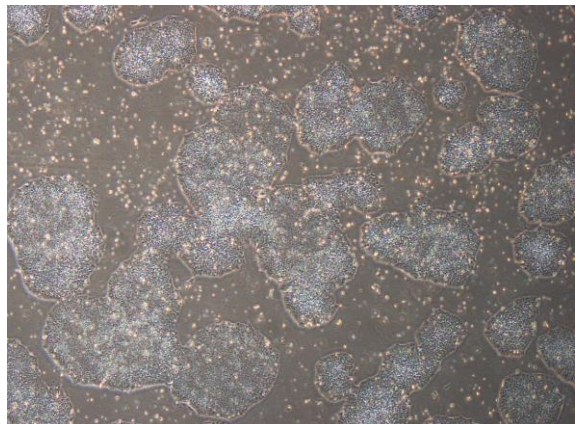
CiRA-j-1623-D: passage-3



CiRA-j-1623-E: passage-3



CiRA-j-1623-F: passage-3



( All images were captured at 4x magnification )